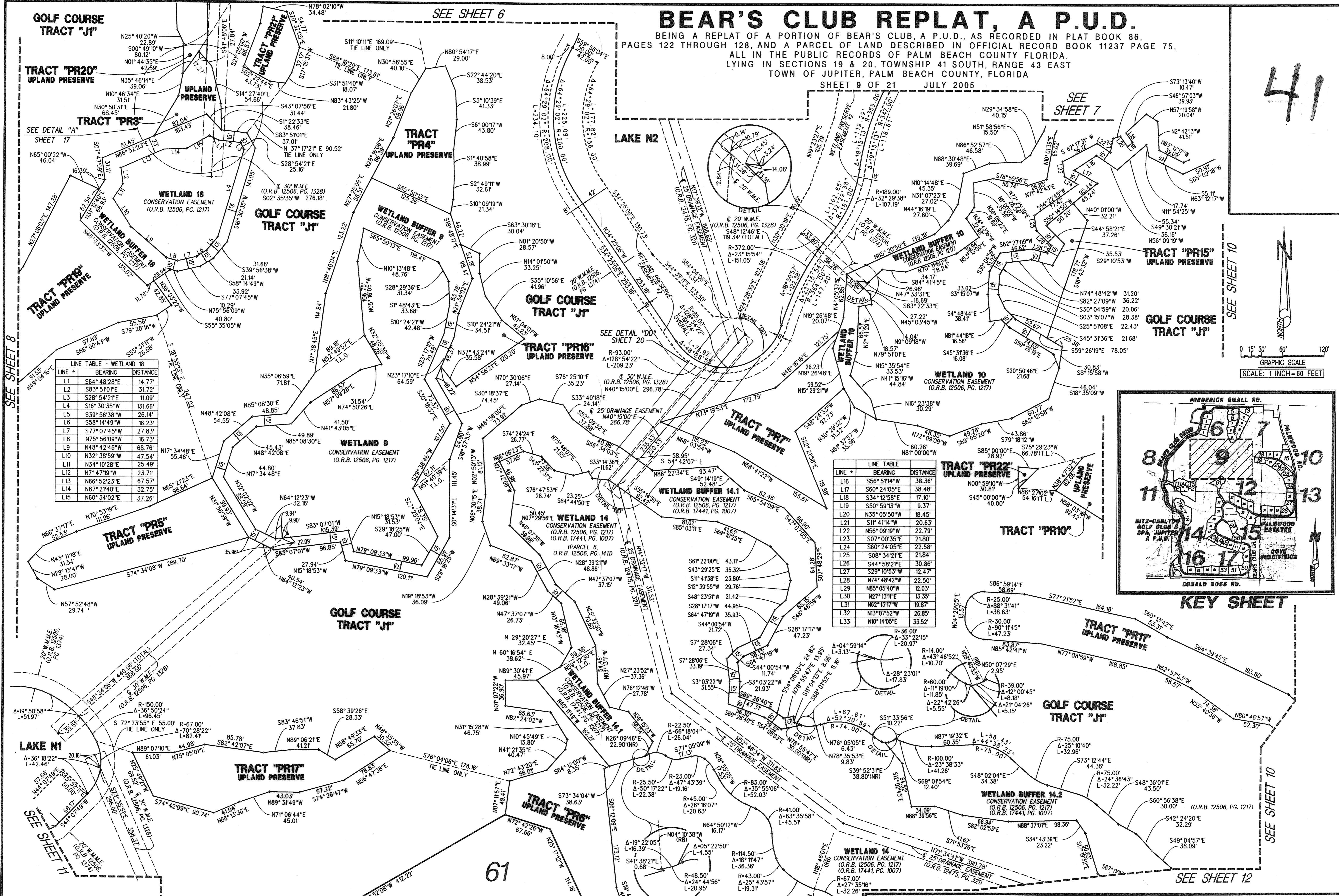


BEAR'S CLUB REPLAT, A P.U.D.

BEING A REPLAT OF A PORTION OF BEAR'S CLUB, A P.U.D., AS RECORDED IN PLAT BOOK 86, PAGES 122 THROUGH 128, AND A PARCEL OF LAND DESCRIBED IN OFFICIAL RECORD BOOK 11237 PAGE 75, ALL IN THE PUBLIC RECORDS OF PALM BEACH COUNTY FLORIDA, LYING IN SECTIONS 19 & 20, TOWNSHIP 41 SOUTH, RANGE 43 EAST TOWN OF JUPITER, PALM BEACH COUNTY, FLORIDA

SHEET 9 OF 21 JULY 2005

41



LINE TABLE - WETLAND 18

LINE #	BEARING	DISTANCE
L1	S64° 48' 28" E	14.77'
L2	S83° 51' 01" E	31.72'
L3	S28° 54' 21" E	11.09'
L4	S16° 30' 35" W	131.66'
L5	S39° 56' 38" W	26.14'
L6	S58° 14' 49" W	16.23'
L7	S77° 07' 45" W	27.83'
L8	N75° 56' 09" W	16.73'
L9	N48° 42' 46" W	68.76'
L10	N32° 38' 59" W	47.54'
L11	N34° 10' 28" E	25.49'
L12	N7° 47' 19" W	23.71'
L13	N66° 52' 23" E	67.57'
L14	N87° 21' 40" E	32.75'
L15	N60° 34' 02" E	37.26'

LINE TABLE

LINE #	BEARING	DISTANCE
L16	S56° 51' 14" W	38.36'
L17	S60° 24' 05" E	38.48'
L18	S34° 12' 58" E	17.10'
L19	S50° 59' 13" W	9.37'
L20	N35° 05' 50" W	18.45'
L21	S11° 41' 14" W	20.63'
L22	N56° 09' 19" W	22.79'
L23	S07° 00' 35" E	21.80'
L24	S60° 24' 05" E	22.58'
L25	S08° 34' 21" E	21.84'
L26	S44° 58' 21" E	30.86'
L27	S29° 10' 53" W	12.47'
L28	N74° 48' 42" W	22.50'
L29	N85° 05' 40" W	12.03'
L30	N27° 13' 11" E	13.35'
L31	N62° 13' 17" E	19.87'
L32	N13° 07' 52" W	26.85'
L33	N10° 14' 05" E	33.52'

